

# PROXEE

## MANUAL

Copyright © Parhelia Tools, 2008

---

## Table of Contents

1. What is »Proxee«?.....	3
Difference between FREE and PRO versions of Proxee: .....	3
What is Proxy server?.....	4
2. Registration and activation of »Proxee« .....	5
Pricing.....	5
Payment.....	5
Registration .....	5
3. Features and usage of »Proxee« .....	6
4. Screens .....	7
5. Future of Proxee .....	9
6. Frequently asked questions (FAQ) .....	9
7. Literature.....	10

## 1. What is »Proxee«?

Proxee is software, which manages proxy settings of other software it supports. Currently it supports three web browsers:

- Internet Explorer 6,7
- Mozilla Firefox 2,3
- Opera 9

Supported operating systems:

- Windows 2000
- Windows XP SP2 32/64 bit
- Windows Vista 32/64bit

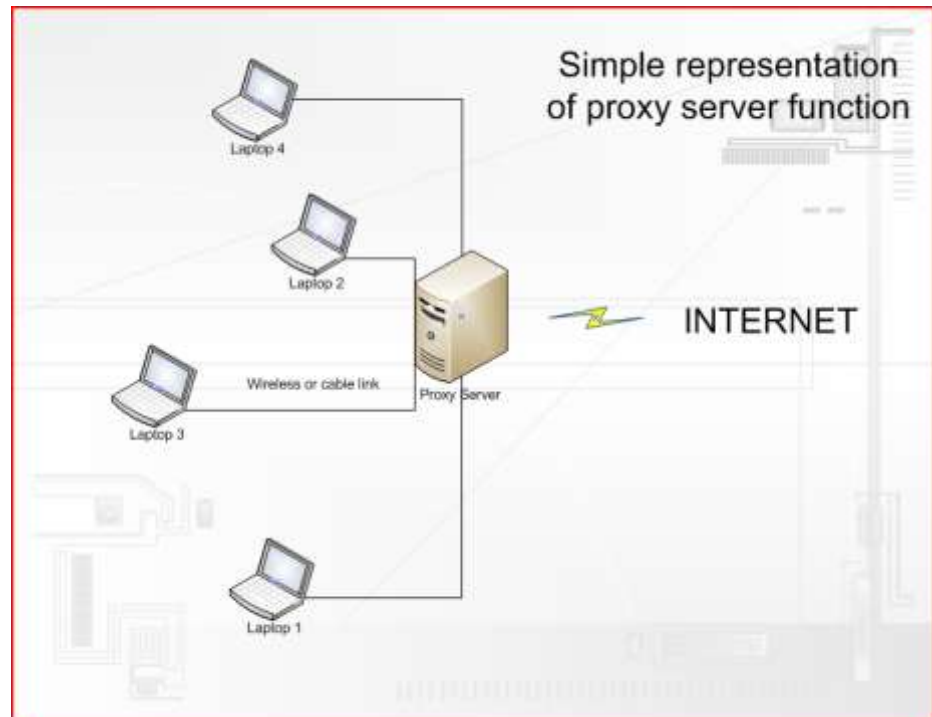
It comes in two packages, FREE and PRO. Free version is obviously free and has limited functionality, while PRO version features full functionality.

### Difference between FREE and PRO versions of Proxee:

Functionality	Proxee FREE	Proxee PRO
<b>Operating system support</b>	Windows 2000, Windows XP SP2 32/64, Windows Vista 32/64	Windows 2000, Windows XP SP2 32/64, Windows Vista 32/64
<b>Application support</b>	Internet Explorer 6,7 Mozilla Firefox 2,3 Opera 9	Internet Explorer 6,7 Mozilla Firefox 2,3 Opera 9
<b>Profile support</b>	2	Unlimited
<b>Autosense Proxy</b>	NO	YES
<b>Price</b>	Free	From 4.8€ to 7.99€ per license

## What is Proxy server?

A proxy server is used in larger companies and organizations to improve network operations and security. It can be used to prevent direct communication between two or more networks. The proxy server forwards allowable data requests to remote servers and/or responds to data requests directly from stored remote server data [1].



If you travel with your laptop from company to company, from network to network, where proxies are present or not, ideal solution for you is Proxee which simply stores, manages and changes proxy settings to applications that supports it (Internet Explorer, Firefox, Opera).

## 2. Registration and activation of »Proxee«

Before you order your Proxee, please check our offers and discounts and check your number of computers you want to install PROXEE on. Please note that license is one-per-computer basis. If you want, we can prepare for you an OEM package (for medium and large packages) so you can easily deploy application through network on computers.

Usually your license is locked to your computer Hard Drive (more correctly first hard drive), so if you change hard drives, or hard drives order your license might not work. You have one free license renewal per year in case of Hard disk failure, change of configuration or changing a drive with new one. After that you must purchase a new license. This type of licenses is usually used for single or small size packages. If you want we can prepare a package for you to simply deploy Proxee through a network (it might take a day or two for you to get this package).

### Pricing

Type of package	Price (€)	Price (\$)*
<b>Tiny Package (1-10 licenses)</b>	7.99	12.47
<b>Small Package (11-100 licenses)</b>	7.20	11.24
<b>Medium Package (101-1000)</b>	6.20	9.68
<b>Large Package (1001-licenses)</b>	4.80	7.49

\*please note that we use daily currency value of USD, so it may change when you buy the product

### Payment

We accept only PayPal for now.

### Registration

Registration is done on our website, when you click on “Buy Now” button. You will be navigated through the whole process. When you register and pay, you will receive an IDKey by an email. You will also get access to “My Account” section of Parhelia Tools website, where you can print a bill, download application or renew a license. You can also browse your registration details. When you download and install PROXEE for the first time, you are asked to enter IDKey to activate it. An internet connection is required to complete activation process. *Please note, that without internet access you won't be able to complete the activation process.*

#### How to activate:

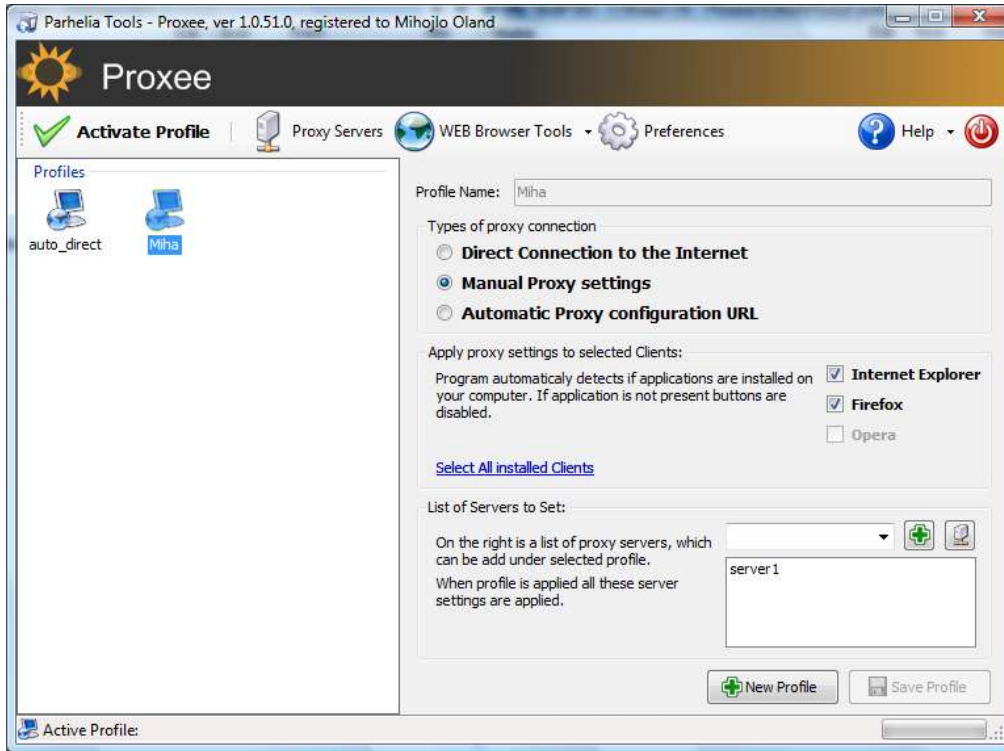
Firstly you enter IDKey in the field and click “Get Serial Number” and you should receive a serial number. Then you click on the button “Register Program” and you are all done. Your version of PROXEE is now activated for one year. Please note, that all licenses are expired within a year and you can renew it.

### 3. Features and usage of »Proxee«

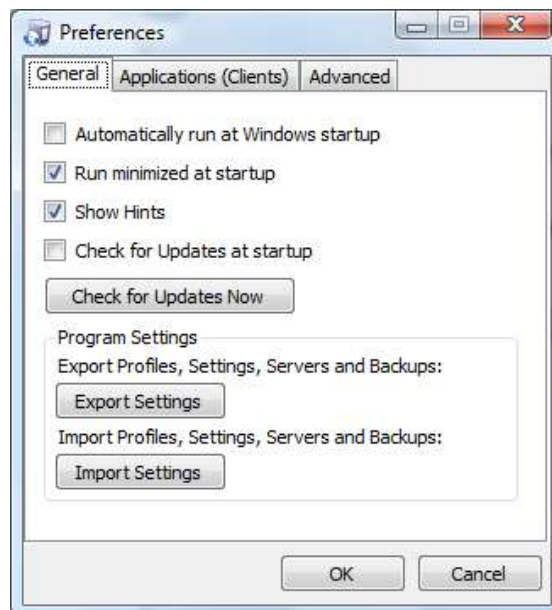
Feature	Description
<b>Profiles</b>	You can create, manage and edit profiles with different proxy servers and preferences. You can manage and add proxy servers and then add them to a specific profile. Number of profiles is determined by version of Proxee (check sections above).
<b>AutoSense Proxy</b>	With this option ON, PROXEE will scan the local network for proxy server and will inform you with the results. Either it will find proxy or you will have to set proxy settings manually.
<b>Support for different types of proxies</b>	Proxee supports many different types of proxies: HTTP, SSL, FTP, GHOPER, SOCKS, WAIS. It depends on application PROXEE supports.
<b>Automatic Updates</b>	PROXEE is checking for updates automatically at startup if you enable this option. You can also check manually for updates within Preferences window.
<b>Migration &amp; Backup Tools</b>	Before applying any changes to application proxy settings, PROXEE backup's old settings and you can restore them at any time. If you are reinstalling the computer you also have Export and Import function, so you can easily migrate settings and profiles between installations.
<b>Run at Startup</b>	If you want, PROXEE can start at Windows Startup, so you'll never have to worry about it.
<b>Easy access</b>	If AutoSense Proxy has not found any configuration, you can easily select appropriate profile from tray. Just right-click on the icon in tray and select profile from menu.

## 4. Screens

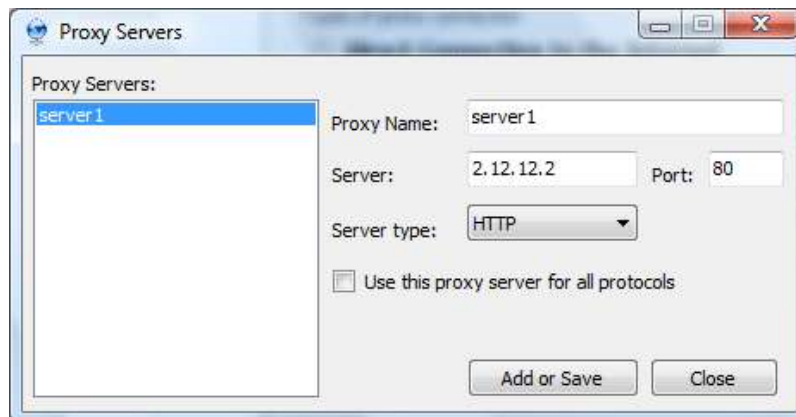
### 1. Main window of Proxee



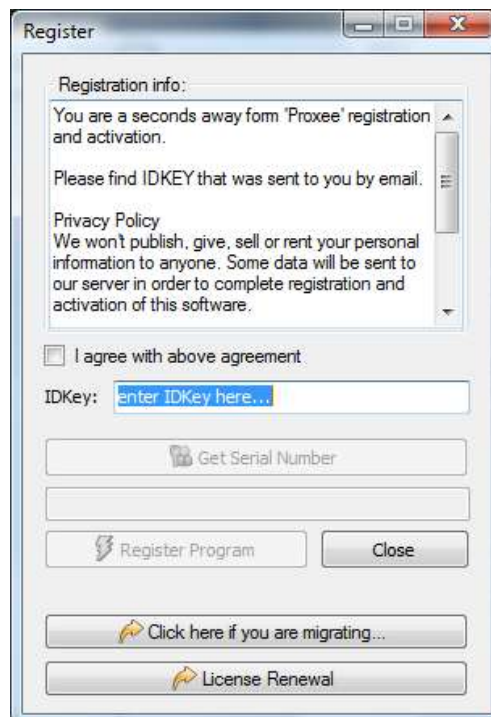
### 2. Preferences window



## 3. Servers window



## 4. Activation window





## 5. Future of Proxee

Future of Proxee is sure »bright«. We have some nice features in mind, and we'll constantly modify it and improve it to suit every need.

## 6. Frequently asked questions (FAQ)

### 1. What is Proxy Server?

A proxy server is used in larger companies and organizations to improve network operations and security. It can be used to prevent direct communication between two or more networks. The proxy server forwards allowable data requests to remote servers and/or responds to data requests directly from stored remote server data [1].

### 2. What is AutoSense Proxy feature?

AutoSense Proxy is a feature in PRO version of Proxee. It scans and tries to find out local Proxy servers and sets its properties to applications it supports. In other words, when you connect to local network at firm 2, PROXEE will determine if proxy is needed to access internet or not. If Proxy is needed than it will scan for Proxy settings and if settings are not found, than you should ask administrator of that company to give you proxy settings. Then you manually create a new profile.

### 3. Proxee says that my license is wrong. What can I do?

It looks like you have swapped hard drive settings in your PC. Please email us at [support@parhelia-tools.com](mailto:support@parhelia-tools.com) and we will resolve this issue together. But remember, you have only one free renewal per year in case of HDD failure or other hard drive changes that affected license to break.

### 4. Proxee says that my license is expired? What can I do?

Your license is expired. Please renew it form Register dialog, by clicking on “**License Renewal**” button.

### 5. I need to reinstall my computer. How can I backup my Proxee settings?

Before you format your system, please select Export settings from Proxee Preferences window. You will select where you want to backup Proxee data. When you reinstall your system, run Proxee and click on “**Click here if you are migrating...**” button and navigate to a folder with backup data of Proxee.

### 6. How can I update my Proxee application?

We will constantly improve and update Proxee and when an update or a new version is available, you'll be notified. To turn on notification, please go to Proxee Preferences window and click Check for Updates button. If a new version is available, please proceed to our website and login with your username and password. After login, click on Download Program Button and you'll download the latest version of Proxee. Then install it.

## 7. Literature

1. <http://www.intel.com/products/glossary/body.htm>